

LIGHT LINE SOCIAL SQUARE





The public art project for the 8 new stations of the Metro North West.



A collaboration between artists
Michaelie Crawford, Turpin Crawford Studio &
Peter McGregor, McGrgeor Westlake Architecture
& Hassell.



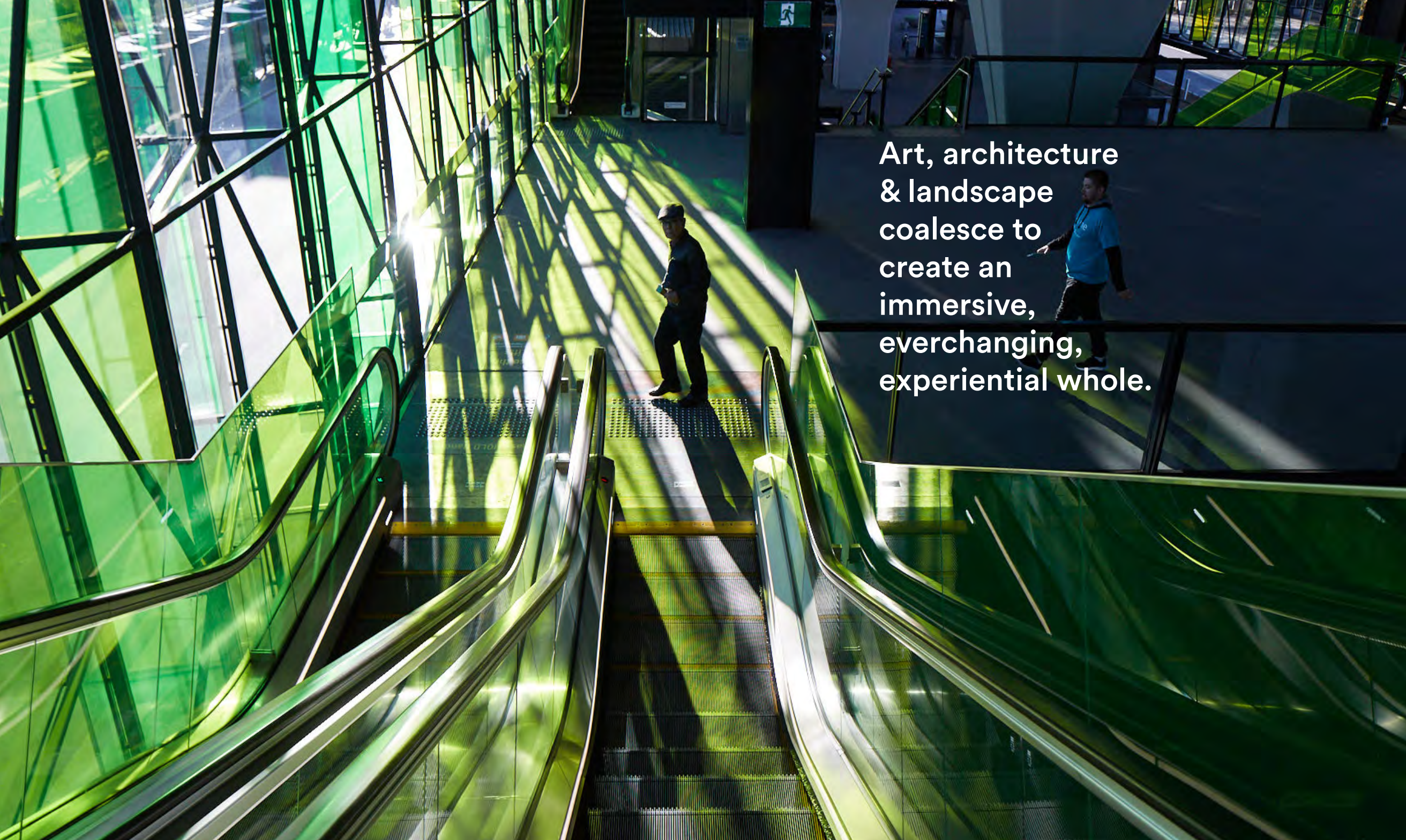
LIGHT LINE SOCIAL SQUARE
is embedded in station architecture
& landscapes - in platforms,

& concourses,



plazas
& public
landscapes.





Art, architecture
& landscape
coalesce to
create an
immersive,
everchanging,
experiential whole.

LIGHT LINE SOCIAL SQUARE is conceptually based in memory & place



The memory of the past is woven into the life of the future - to meaningfully embed the 8 new stations into this rapidly developing region.

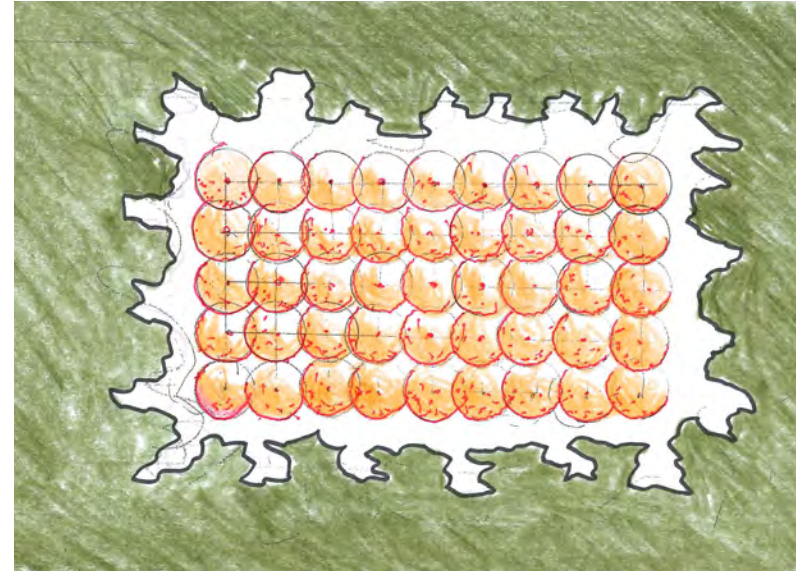
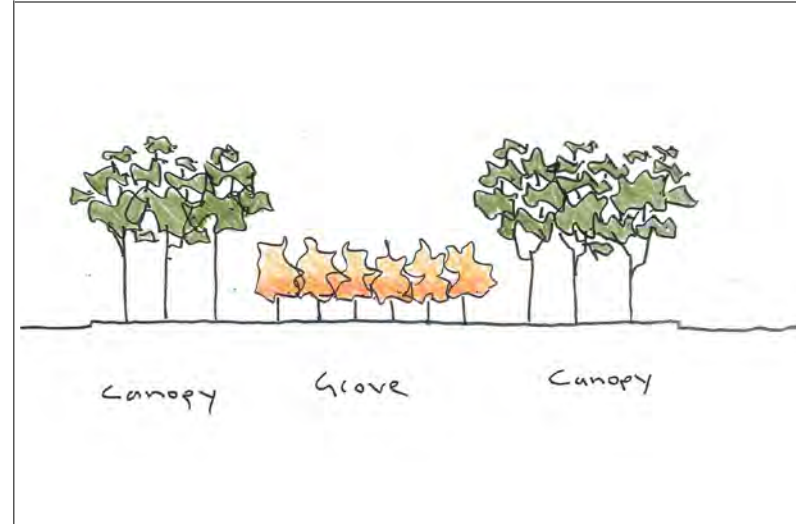
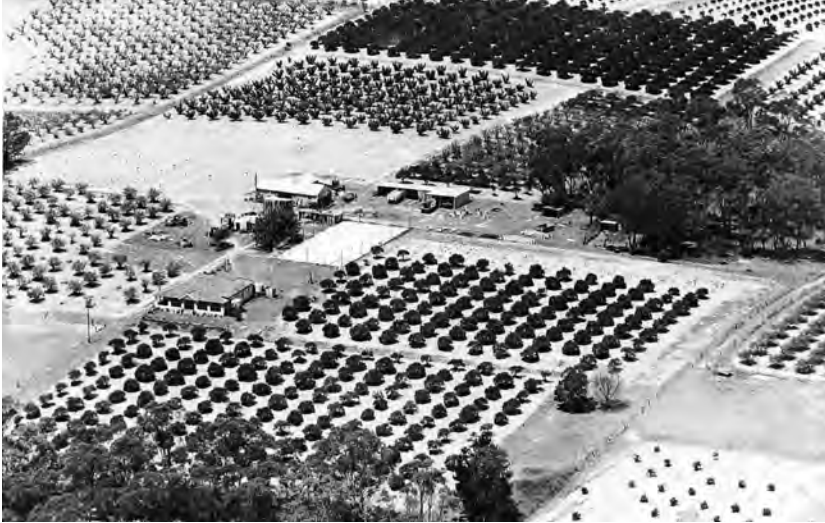


Warren Rowles, Glenorie farmer on the outskirts of the Hills district.



Cherrybrook Station, Social Spheres furniture & Urban Grove trees.

LIGHT LINE SOCIAL SQUARE : framework - the grid & the grove



The regular geometry of the region's orchards, carved out within the bush landscape, is translated into the grid of the station 'Urban Groves', framed by reinstated indigenous trees, endemic to the area.

The grid & the grove : historic reference - contemporary realisation

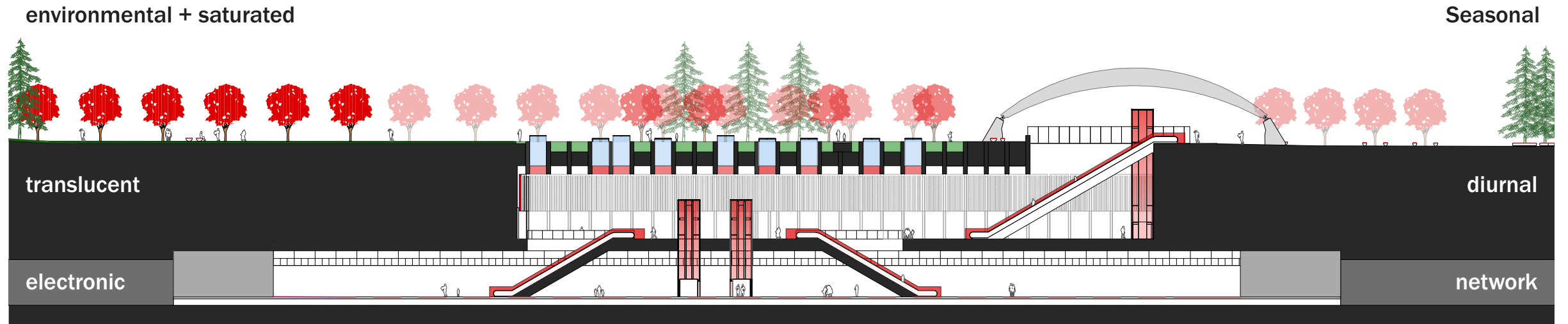


Hills District orchard, carved out within the bush, in the 1940's.

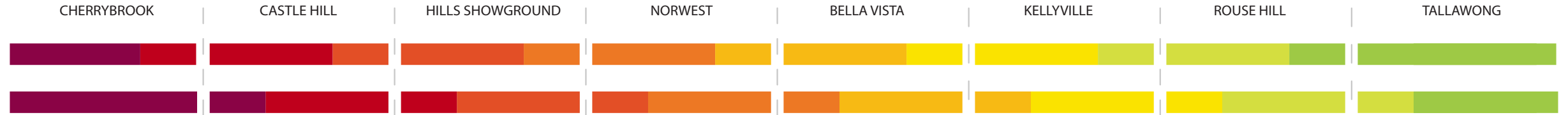


Castle Hill Station - the order of the station grid & grove, framed by native trees, set within the complexity of contemporary urban development.

LIGHT LINE SOCIAL SQUARE : framework - colour & light & time



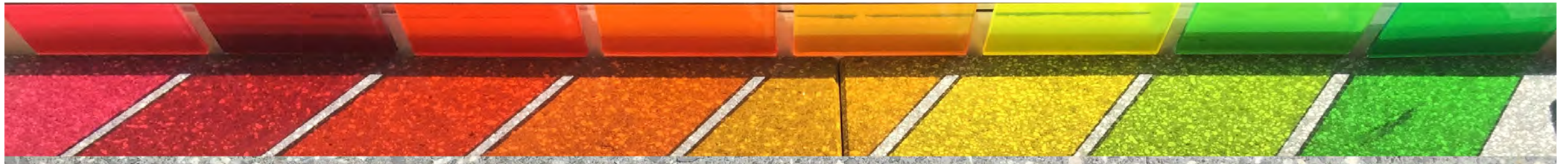
A line-wide spectrum of station-specific hues references the produce of the historic orchards.



Colour is line wide and episodic within architectural, landscape and art elements.



Colour references place and history.



Colour is transparent and cast in Skylight Lanterns, Light Screens glazed facades and Colour Ways stairs and escalators.

In signature transparent glass, colour is illuminated & cast, diurnal, seasonal & everchanging.



In 'Urban Groves' of flowering & deciduous trees & plants, colour is environmental, seasonal & annual.



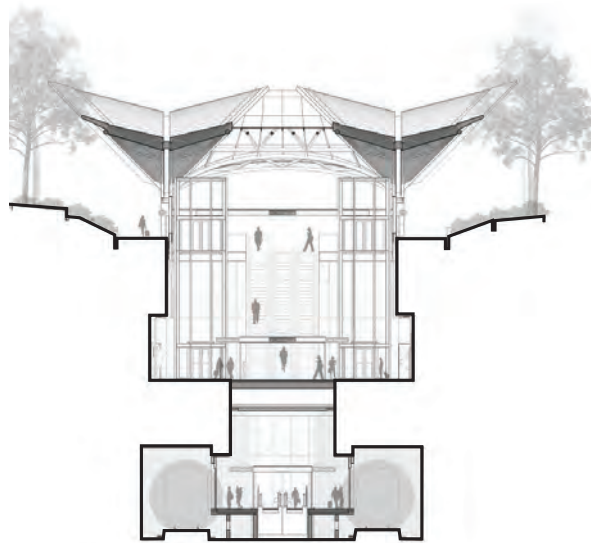
In the 'Social Spheres' sculptural furniture, colour is rich, saturated & permanent.



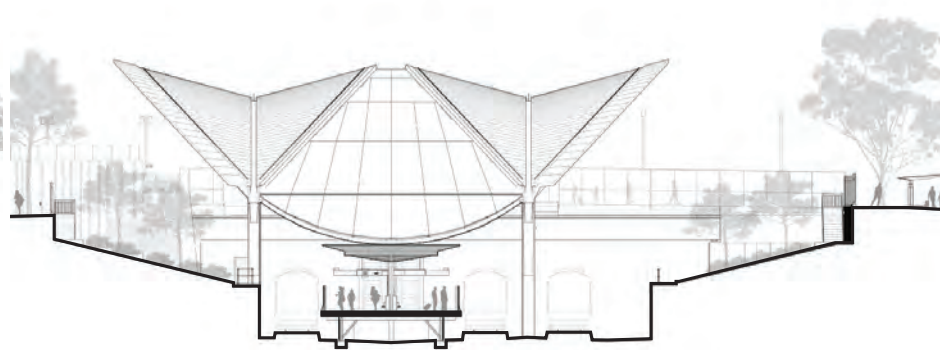
In the platform installation, 'Light Line' - colour is illuminated & programmed.



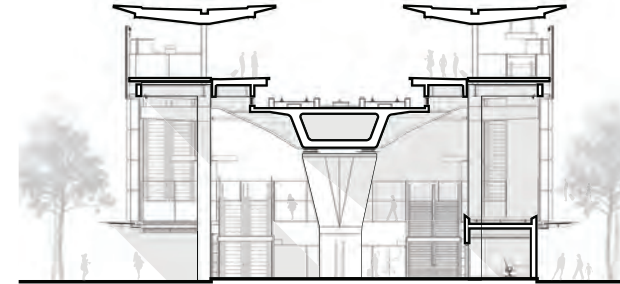
THREE STATION TYPOLOGIES : the North West Metro travels like a datum through changing topography the Hills and the Cumberland Plain.



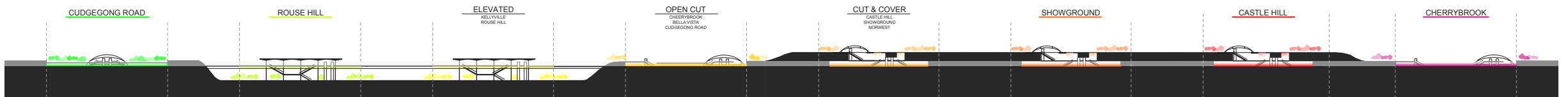
underground



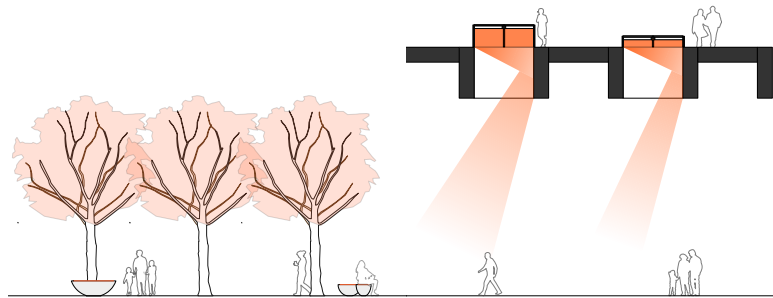
open-cut



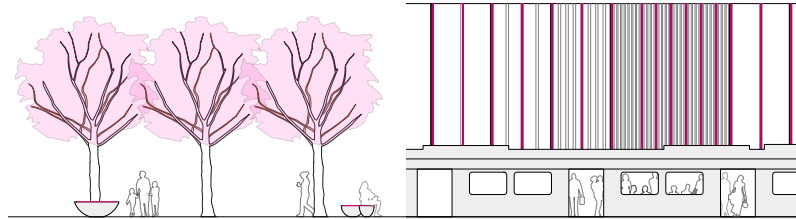
elevated



ELEMENTS : Light Line Social Square comprises an orchestrated suite of elements that respond to the three station typologies, some are line-wide, and some are station-specific.



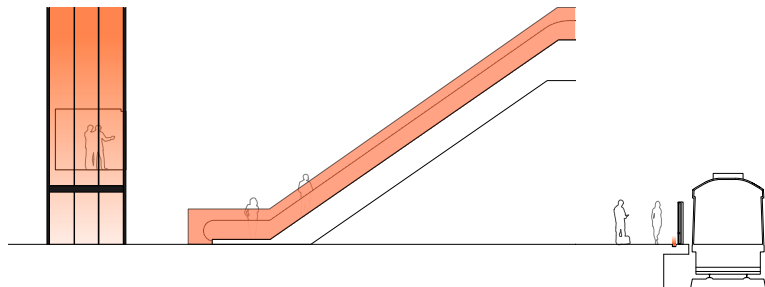
URBAN GROVES + SOCIAL SPHERES + SOCIAL PLAY + SKYLIGHT LANTERN FIELDS +



URBAN GROVES + SOCIAL SPHERES + SOCIAL PLAY + TERRACE LINES +

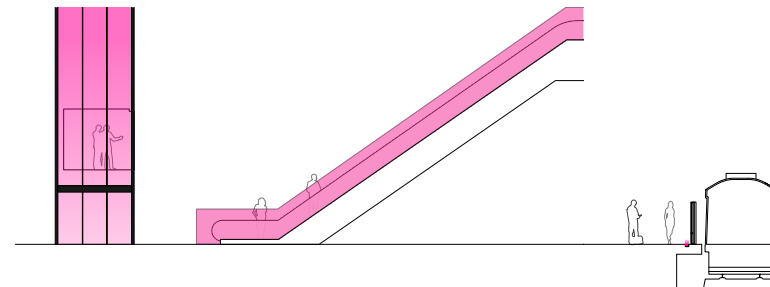


URBAN GROVES + SOCIAL SPHERES + SOCIAL PLAY + CLOUD ROOMS + LIGHT SCREENS +



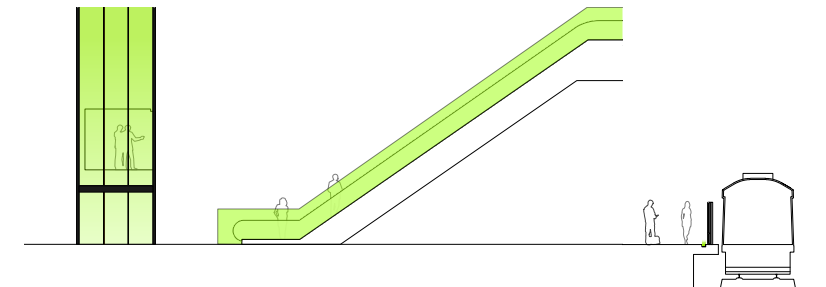
COLOUR WAYS +

LIGHT LINE



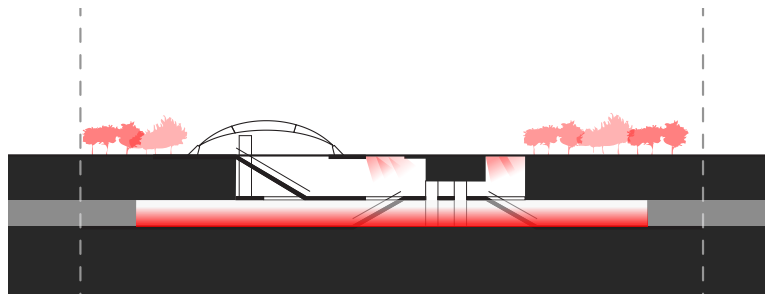
COLOUR WAYS +

LIGHT LINE

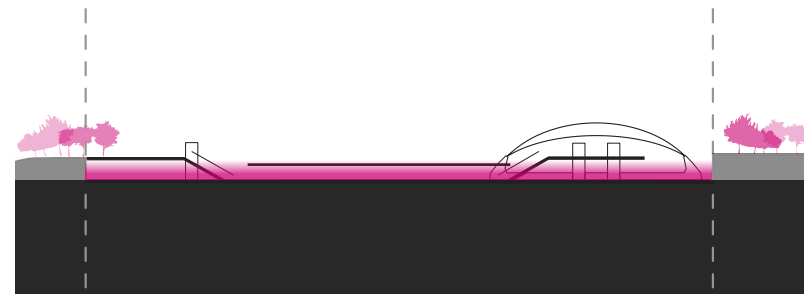


COLOUR WAYS +

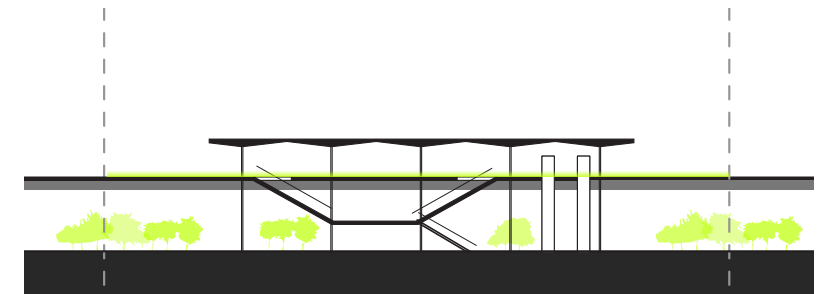
LIGHT LINE



UNDERGROUND



OPEN CUT



ELEVATED

Line-wide elements : 'Urban Grove' seasonal trees & plantings

NATIVE TREE



Angophora floribunda



Eucalyptus crebra



Eucalyptus crebra



Eucalyptus crebra



Eucalyptus moluccana



Eucalyptus moluccana



Lophostemon confertus



Eucalyptus crebra

SOCIAL SQUARE TREE | TERRACE TREE



Prunus cerasifera 'Nigra' | Prunus x bilreana



Brachychiton acerifolius



Sapium sebiferum



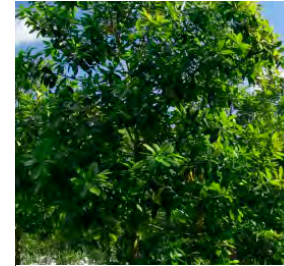
Pistacia chinensis



Pyrus calleryana | Xylosma senticosum



Tristaniopsis Laurina



Tristaniopsis laurina 'Luscious'



Fraxinus griffithii | Murraya paniculata

UNDERSTORY



Gazania sp.



Kennedia rubicunda



Gazania sp.



Grevillea juniperina 'Mongolo'



Hibertia scandens



Hypericum clycinum



Pittosporum tobira 'Miss Muffet'



Vinca minor 'Alba'

CHERRYBROOK

CASTLE HILL

HILLS SHOWGROUND

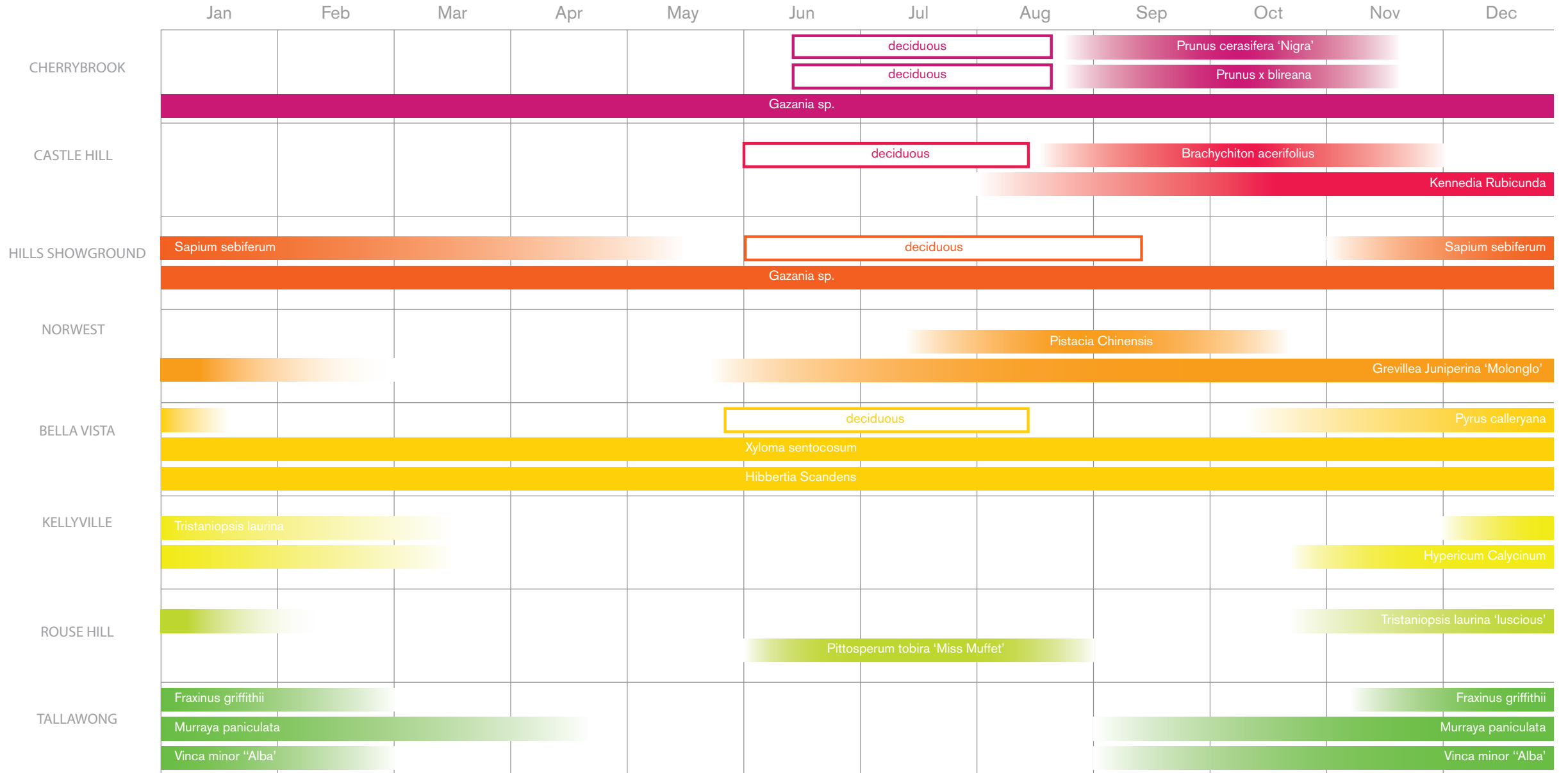
NORWEST

BELLA VISTA

KELLYVILLE

ROUSE HILL

TALLAWONG









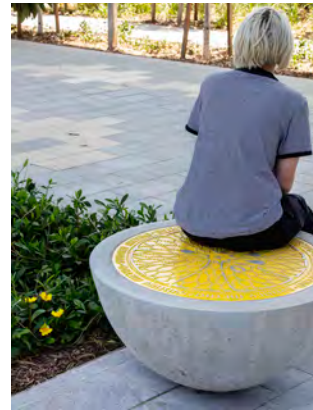




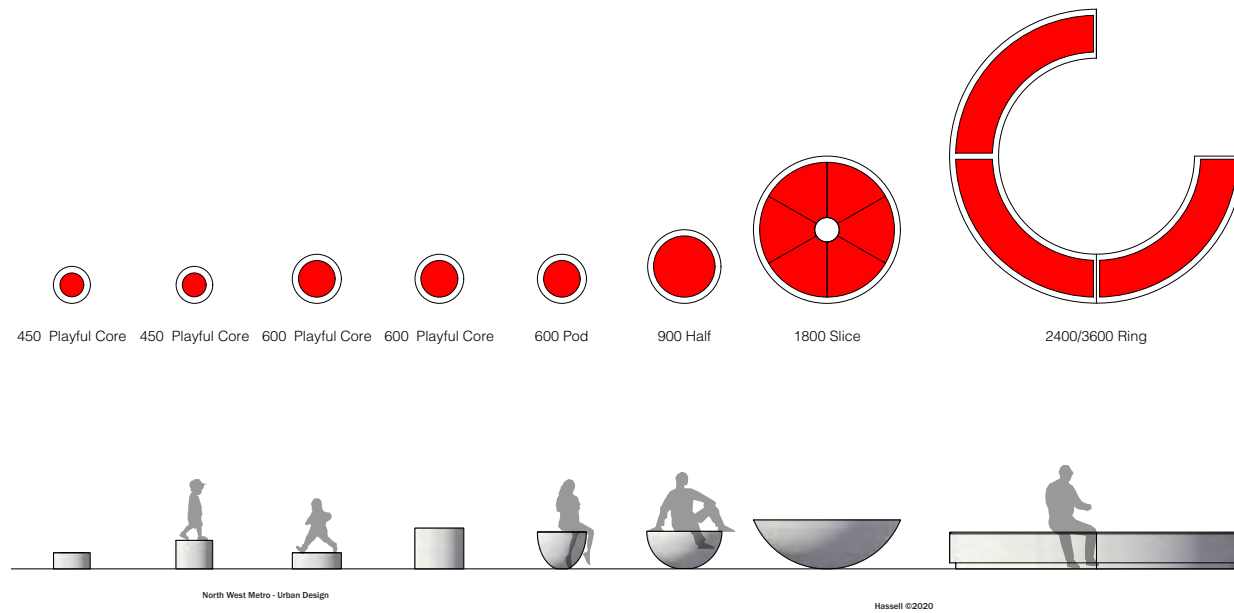




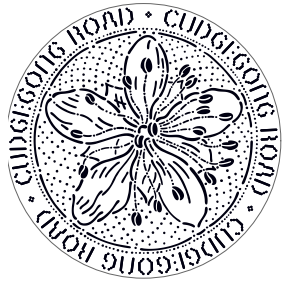
Line-wide element : 'Social Spheres' sculptural furniture



in different sizes & configurations,

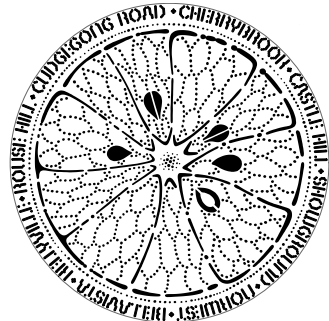


referencing the region's historic orchards & their produce,



POD - BLOSSOM

The suite of relief designs for the cast aluminium lids reference the area's orchards. The 'Pod' is the only station specific casting with each station name framing a graphic of a citrus blossom.



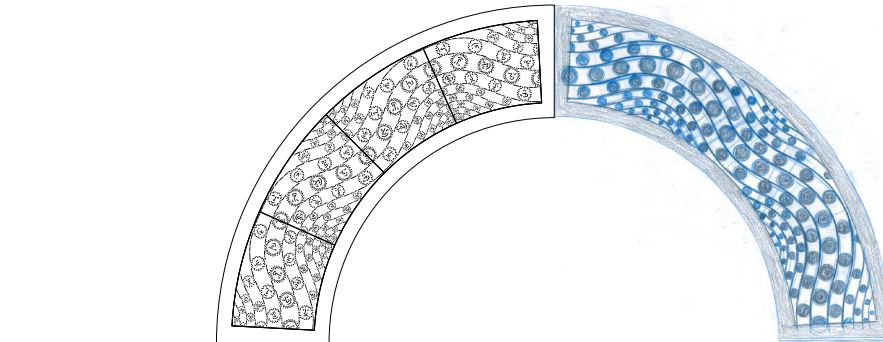
HALF - FRUIT

The area was once the most significant orange producing region in the early colony and many types of citrus were grown in the area. A single casting based on the cross-section of a citrus fruit is framed by all 8 station names. Together the 'Pod' and the 'Half' denote the line-wide and the station specific.



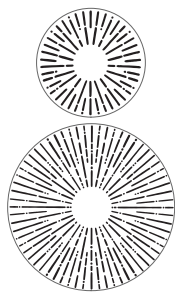
SLICE - TREE

The 'Slice' graphic is based on the dendritic patterns of citrus tree branches. The design is framed by the name of this first section of the line, 'Sydney Metro Northwest'. The slice is made up of 6 x 60 degree segments and arranged as a repeat pattern.



RING - FIELD

The ring is either half or three quarters of a circle. The graphic pattern for this larger element combines the undulating lines of a hillside orchard grove with 'face' pictograms to playfully reference the idea of the *Social Square*. Each quarter of the circle is made up of 4 repeat casting.



CORE - SUNBURST

The playful 'Core's' single casting is based on the sun burst.



in the colour of each station.



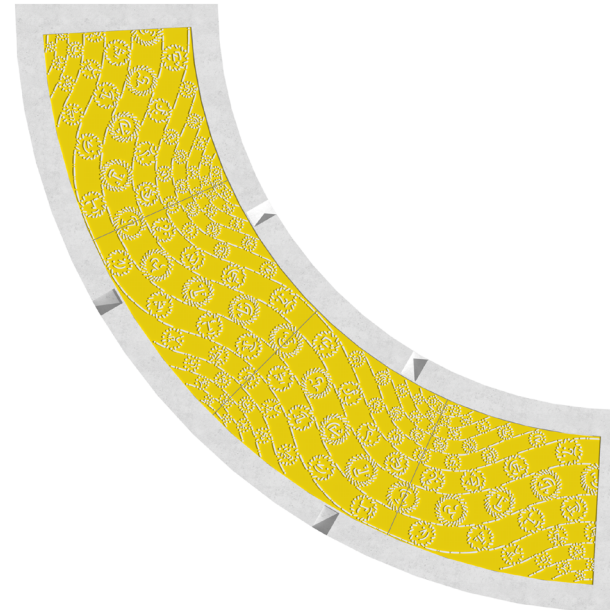
Pod - orange blossom motif with the Station name & colour



Slice - Orchard tree dendritic pattern



Half - Citrus fruit cross section



Ring - Undulating orchard / Social Square



Core - Sunburst















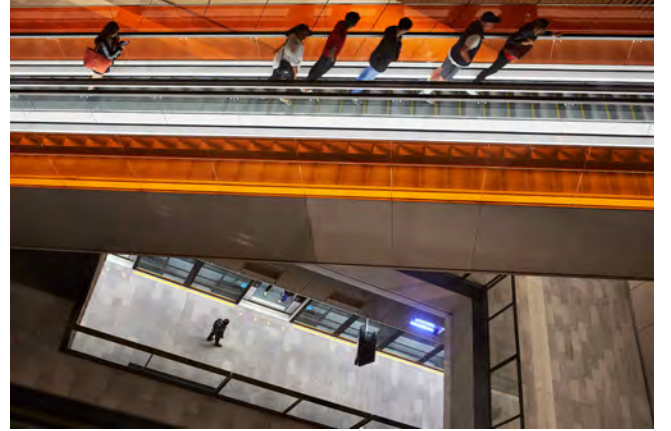
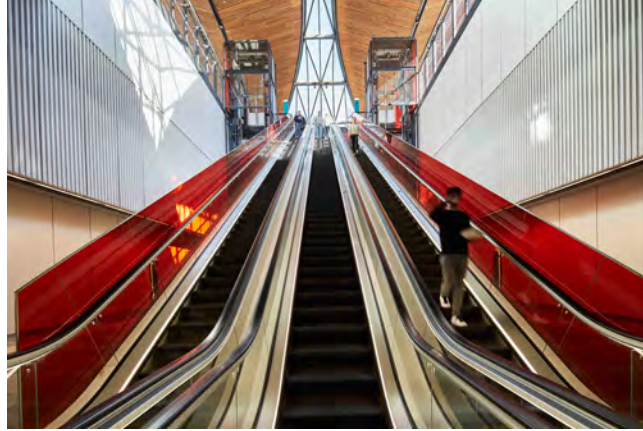
TEMPUS ST
MAIN ST



Please remember
Peace
When



Line wide element : 'Colour Ways' escalators, stairs & lifts





↓ Platforms ↓

Information
Emergency
HELP

Bradfield Pde













2 Metro to Tallawong

Way out →

Toilets

Toilets

FIRE SAFETY DOOR

HOLD HANDRAIL
STAND STILL
CHILDREN MUST BE SUPERVISED
DO NOT LEAN OVER HANDRAIL



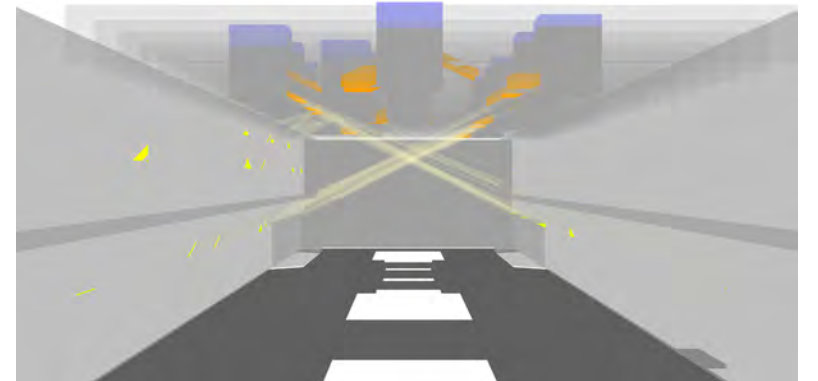
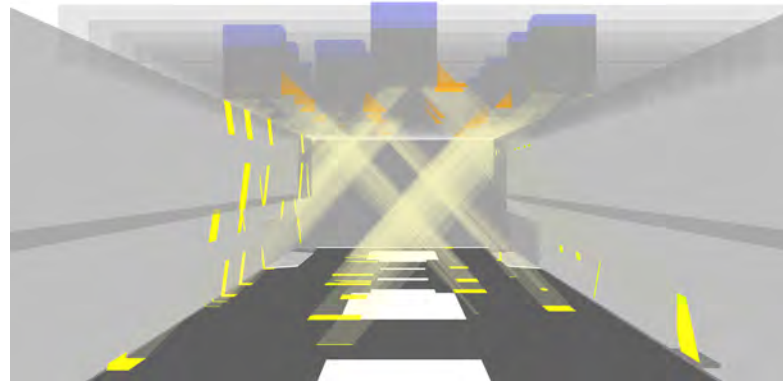
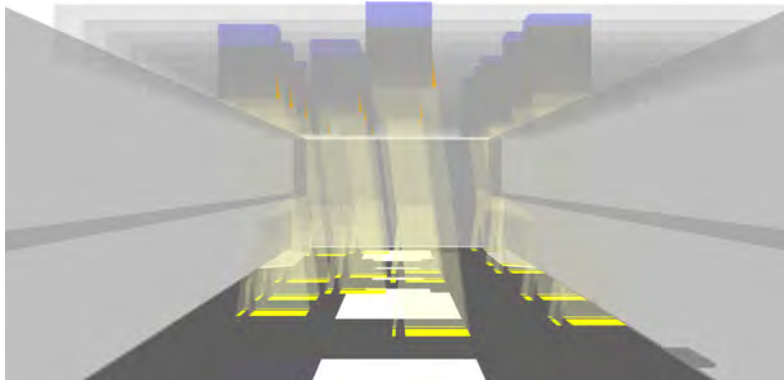
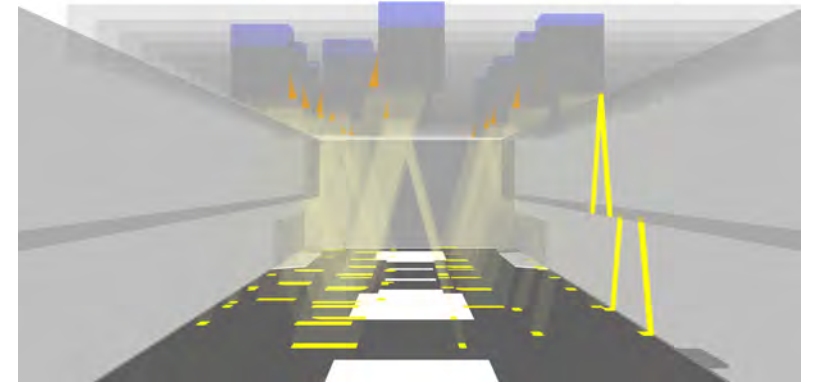
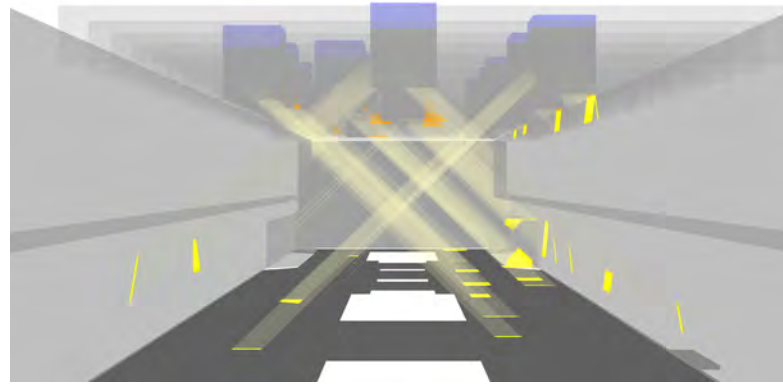
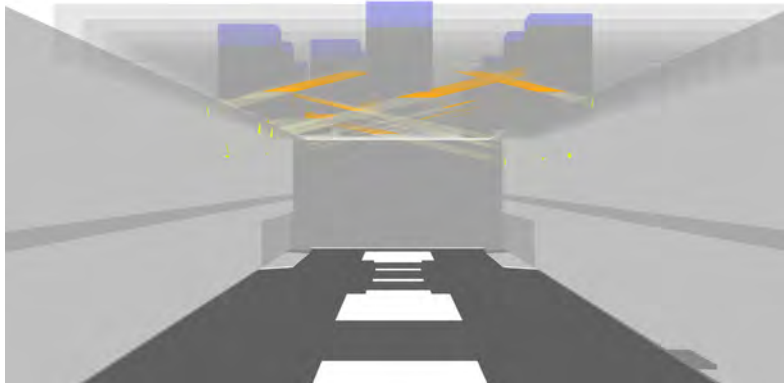


Underground station-specific elements : 'Skylight Lanterns'

Castle Hill, Hills Showground, Norwest



Sunlight passes through the 'Skylight Lanterns' casting shifting patterns of light from dawn till dusk











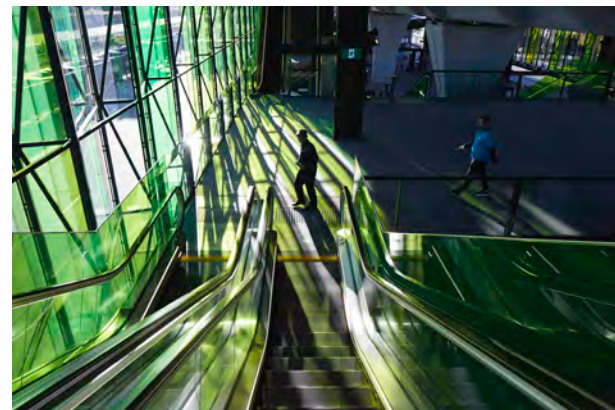
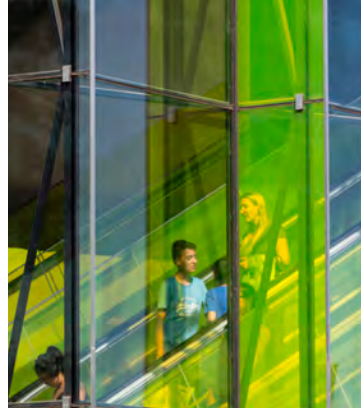
Brookhollow Avenue

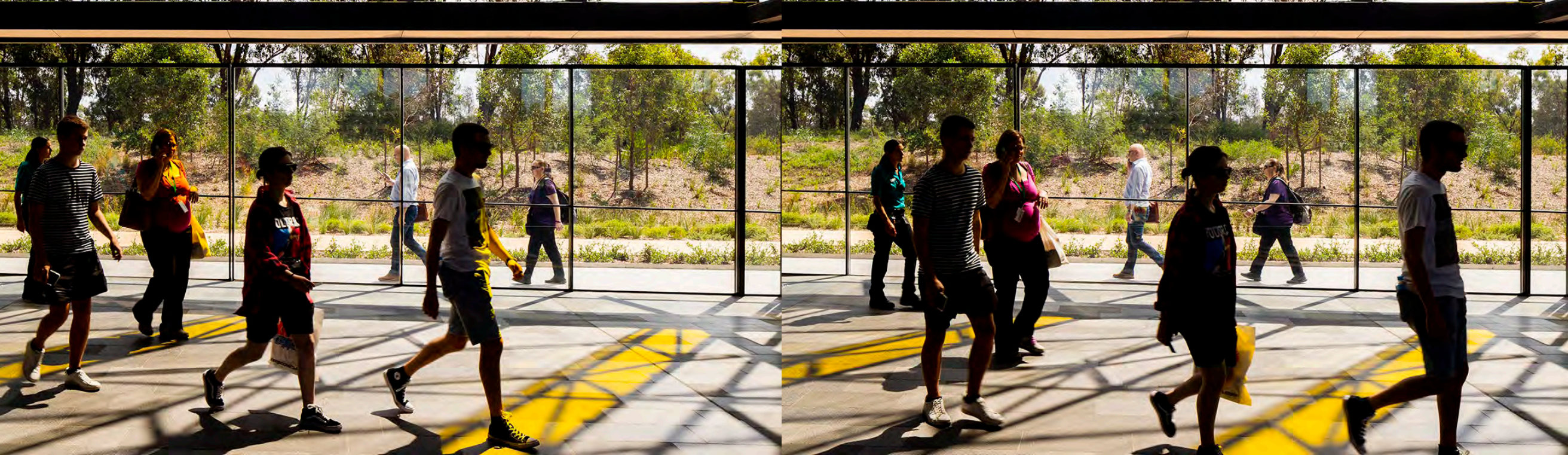
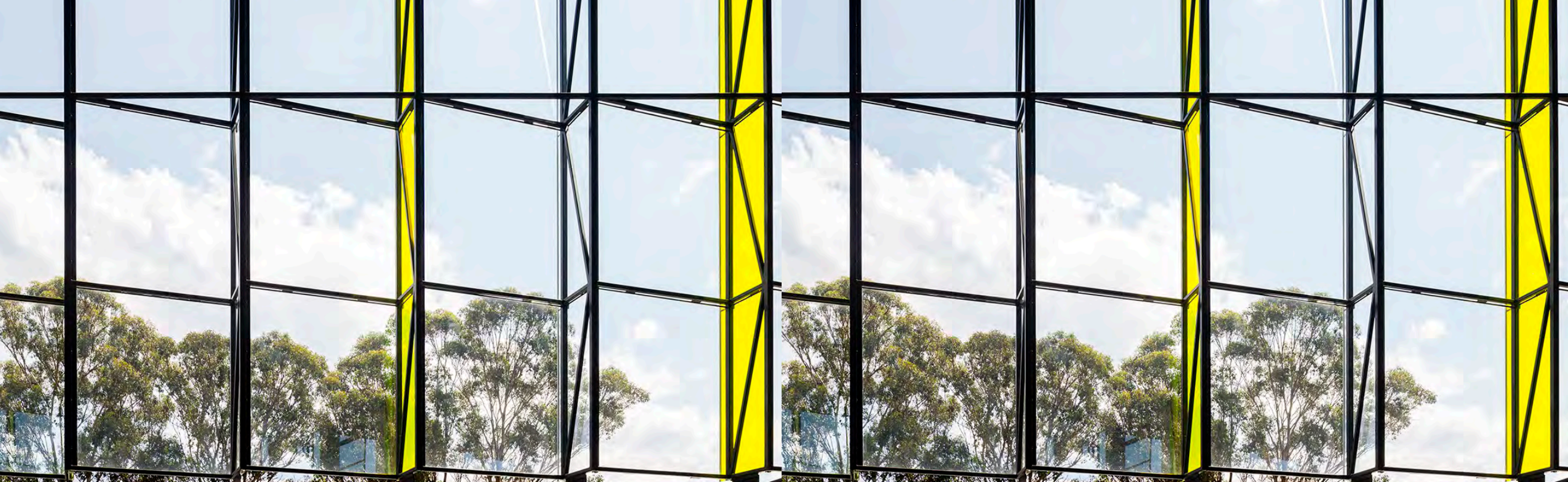
M





Elevated station-specific elements : 'Light Screen' glazed facades Kellyville & Rouse Hill







M

Rouse Hill

↑ Platforms ↑

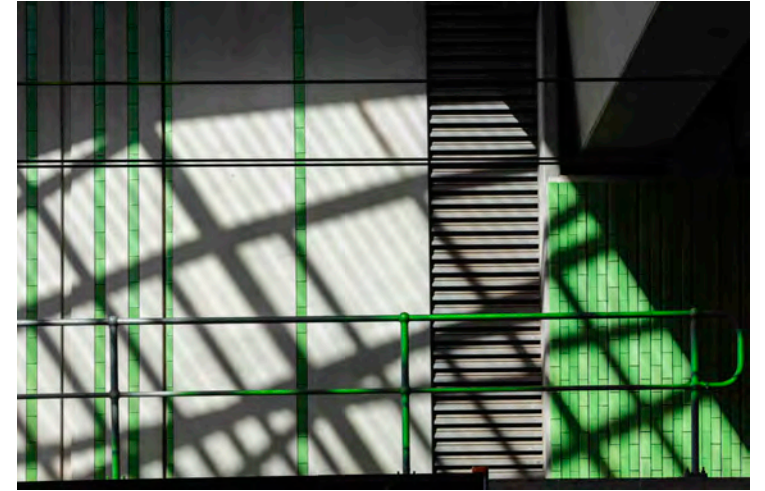
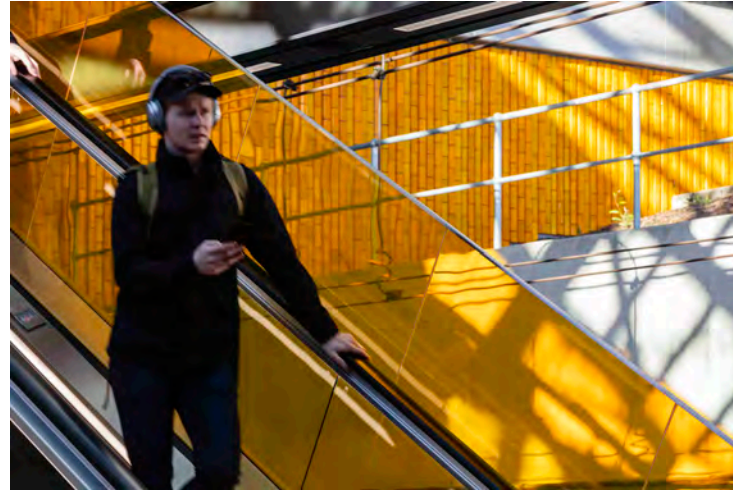
Rouse Hill





MEDICAL & DENTAL CENTRE

Open-cut station-specific elements : 'Terrace Lines' glazed tile walls Cherrybrook, Bella Vista, Tallawong















Line wide element : 'Light Line' programmed platform light installation





DOORS OPEN

2

2

Emergency door release

- 1. Pull the release handle
- 2. Push the door open
- 3. Hold the door open until the train has stopped

Macquarie Uni
West Park
Epping



North Concourse





Platform 2
Wong 2

Way out



Wong 2

Access to Wheelchair Space

Platform 2
Door 9

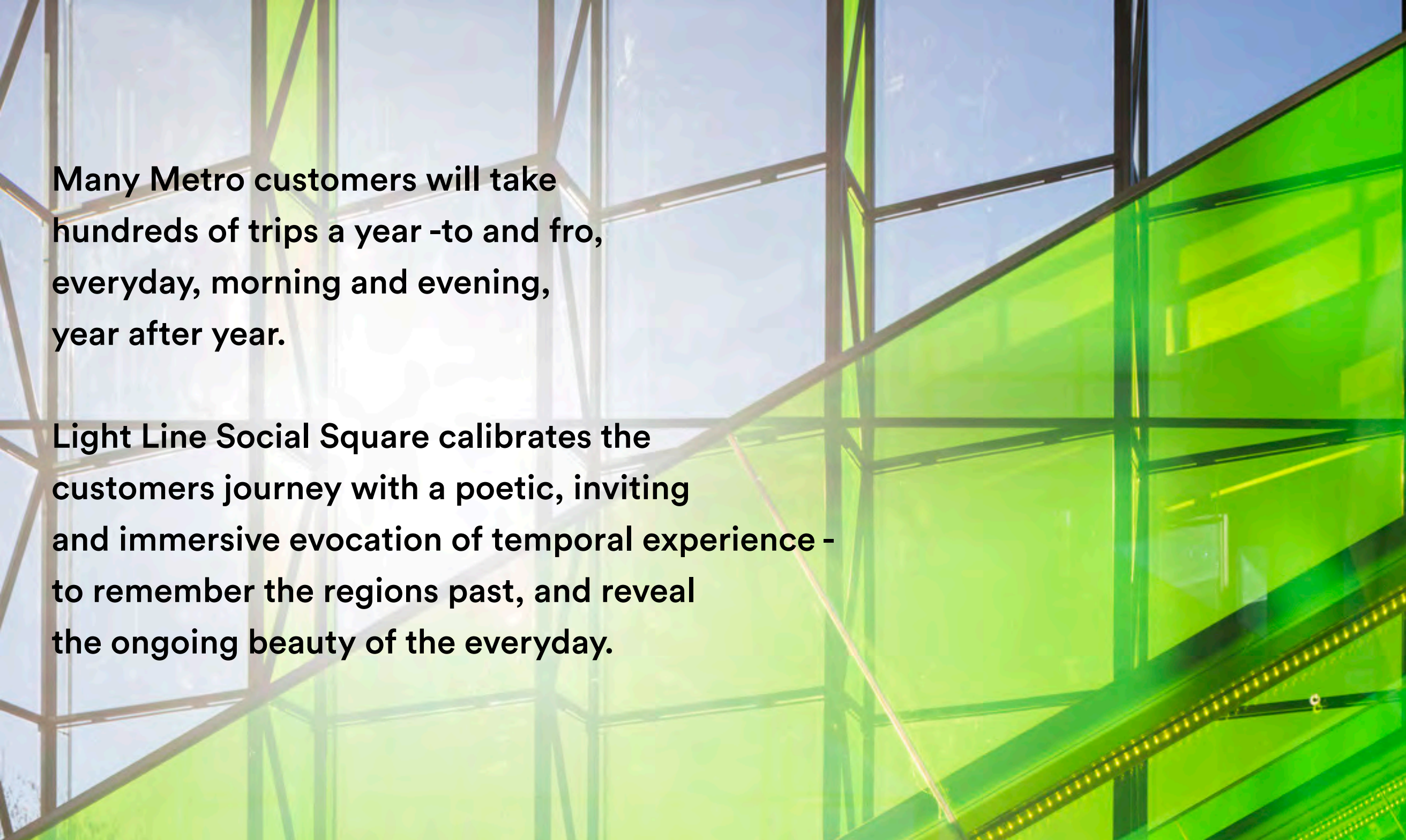
GOOD MORNING YOU MAKE ME HAPPY
I MAY JUST DO THAT I'M MORE RELAXED NOW
PROUD OF MYSELF TO
I'M ON MY WAY



← Themeda Avenue Implexa Parade

2

TAKE ME SHOPPING I'M ON MY WAY
IT'S MORE THAN I EXPECTED HOW'S YOUR MUM?
TOP UP MY PLANNING MY DINNER H



Many Metro customers will take hundreds of trips a year -to and fro, everyday, morning and evening, year after year.

Light Line Social Square calibrates the customers journey with a poetic, inviting and immersive evocation of temporal experience - to remember the regions past, and reveal the ongoing beauty of the everyday.

POST SCRIPT

Hassell, Turpin Crawford Studio & McGregor Westlake Architecture were awarded the Lloyd Rees Award for Urban Design and a commendation for Public Architecture for the Metro North West from the Institute of Architects (NSW)

